

Lug Mounted Hoists

P1 Series

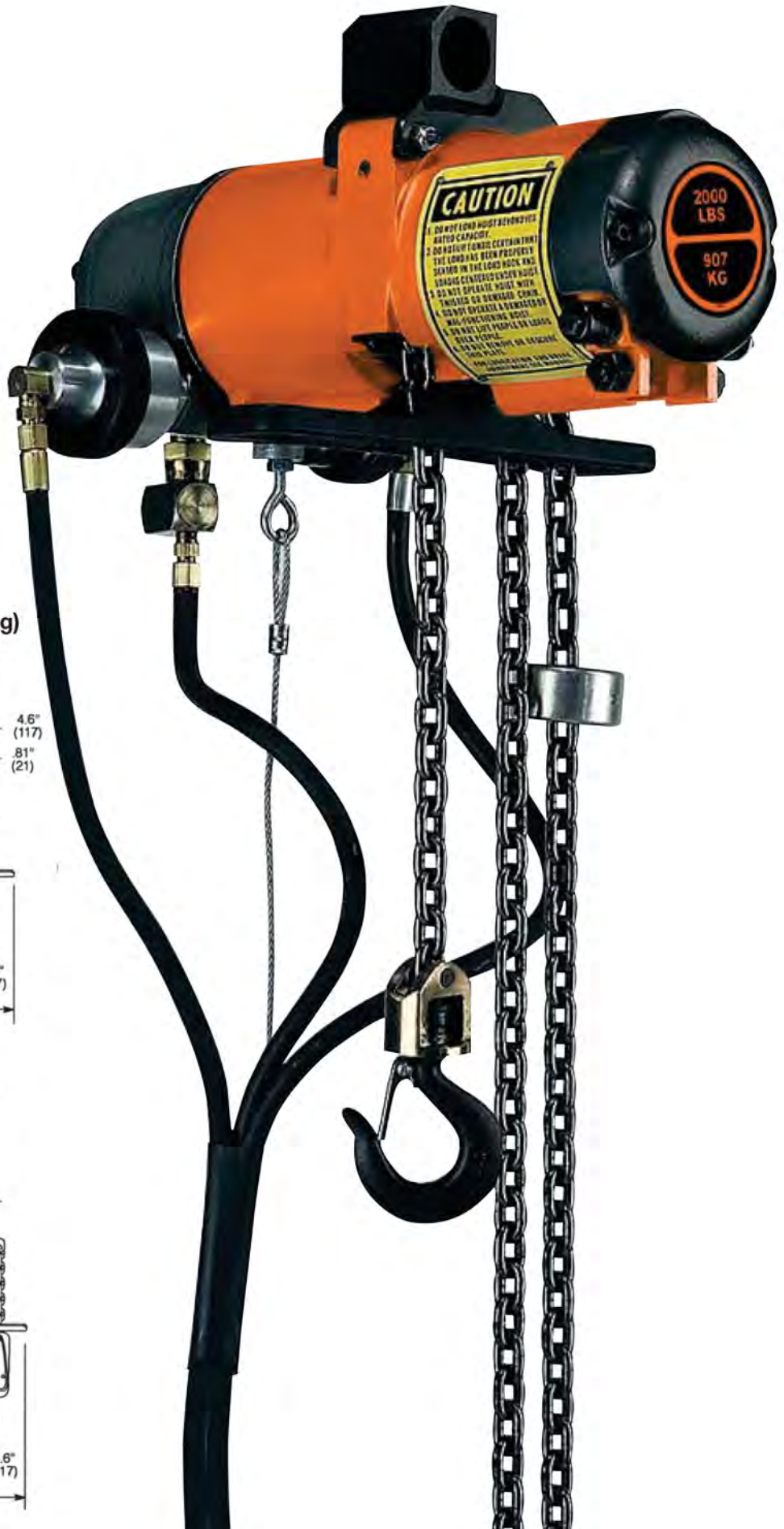


P1 Series

Capacity:

300-2000 lbs. 136-907 kg

- Axial Piston Air Motor
- Rope or Pendent Control
- Link Chain

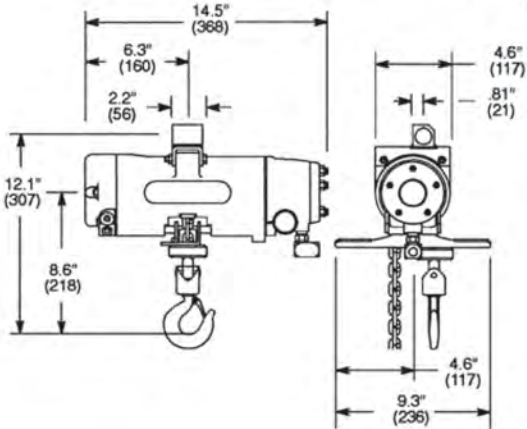


CAUTION

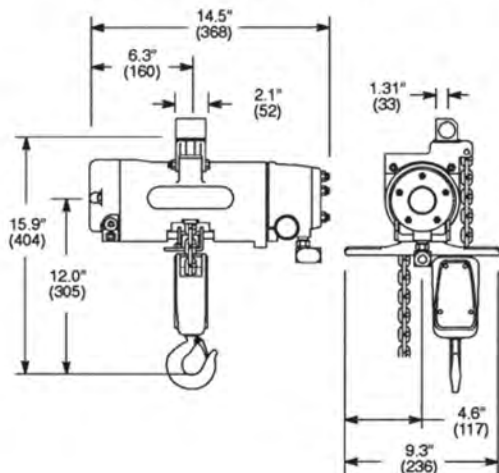
- DO NOT EXCEED HOIST RATED CAPACITY.
- DO NOT USE HOIST UNLESS THE LOAD HAS BEEN PROPERLY CENTERED ON THE LOAD BEARING SURFACE. LOADS CENTERED ON THE HOIST WILL BE LIFTED OR BURNED. CAUTION SHOULD BE EXERCISED TO AVOID DAMAGE TO THE HOIST AND THE LOAD.
- DO NOT OPERATE A HOIST ON A SLOPE.
- DO NOT OPERATE A HOIST ON A SLOPE.

2000
LBS
907
KG

Single Reeved
300 lbs. (136 kg), 500 lbs. (227 kg)
& 1000 lbs. (454 kg) Capacity



Double Reeved
2000 lbs. (907 kg) Capacity



P1 L A 03 L P E L ... A A A 03

SERIES

P1

TYPE MOUNT

L = Lug

FEATURES

- A = Standard Unit
- H = Hi Temp Grease
- P = Epoxy Paint
- S = Epoxy Paint/Hi Temp Grease

CAPACITY

- 03 = 300 lbs. 10 = 1000 lbs.
- 05 = 500 lbs. 20 = 2000 lbs

CHAIN TYPE

L = Link

CONTROL TYPE

- P = Pendent (Standard-2LVR)
- R = Rope
- T = No Control Type (Rope Ready)
- W = None-Pendent Ready

CONTROL LENGTH

- E = 5 FT T = 20 FT
- J = 10 FT Y = 25 FT
- O = 15 FT Z = No Control Length

CHAIN OPTIONS

- L = Standard Link
- P = Zinc Plated Link
- X = No Chain

CAPACITY RATING

- 03 =300 lbs. (03/04/05/09/10)
- 05 =500 lbs. (04/05/09/10)
- 10 =1000 lbs. (09/10)
- 11 =1000 lbs. (20)
- 15 =1500 lbs. (20)
- 20 =2000 lbs. (20)

VINTAGE

A

LOWER HOOK

- A = Standard (03/05/10)
- B = Bullard (03/05/10)
- H = Standard Link (20)
- I = Bullard Link (20)
- X = No Lower Hook

UPPER LUG

- A = Standard (03/05/10)
- B = Standard (20)
- X = No Upper Hook

AMOUNT OF LIFT

--- Specify Length in Feet, 3 digits

Example: 10' lift 010

Note: Numbers in parentheses following an option, represent the hoist capacities for which that option is available.

| Model Number | | Chain Type | Capacity | | Lifting & Lowering Speeds | | | | Reeves | Weight | |
|--------------------|--------------------|------------|----------|-----|---------------------------|-----|---------------|-----|--------|--------|----|
| Pendent Control | Rope Control | | lbs. | kg | Maximum Lift | | Maximum Lower | | | lbs. | kg |
| | | | | | | fpm | mpm | fpm | mpm | | |
| P1LA03LPEL010AAA03 | P1LA03LREL010AAA03 | Link | 300 | 136 | 80 | 24 | 88 | 27 | 1 | 28 | 13 |
| P1LA05LPEL010AAA05 | P1LA05LREL010AAA05 | Link | 500 | 227 | 47 | 14 | 115 | 35 | 1 | 28 | 13 |
| P1LA10LPEL010AAA10 | P1LA10LREL010AAA10 | Link | 1000 | 454 | 19 | 6 | 49 | 15 | 1 | 28 | 13 |
| P1LA20LPEL010BHA20 | P1LA20LREL010BHA20 | Link | 2000 | 907 | 9.5 | 3 | 24 | 7 | 2 | 31 | 14 |

General:

Air Inlet: 3/8" NPT (use 1/2" I.D. Hose)
 Performance rated at 90 psig (6 bar/620 kPa) air pressure.
 Air Consumption 25 cfm (.71 m³/min.) at rated load.

Standard Equipment:

Lug mounted air hoist with 10 ft. (3.0m) lift
 Rope Control: 5 ft. (1.5m) rope length
 Pendent Control: 5 ft. (1.5m) hose length

Extra Equipment:

Chain container – page 54-55
 Hoist trolleys – page 22
 Auxiliary cable (Backup suspension) – page 57
 Piped exhaust adapter (1/2" NPT) – 500344